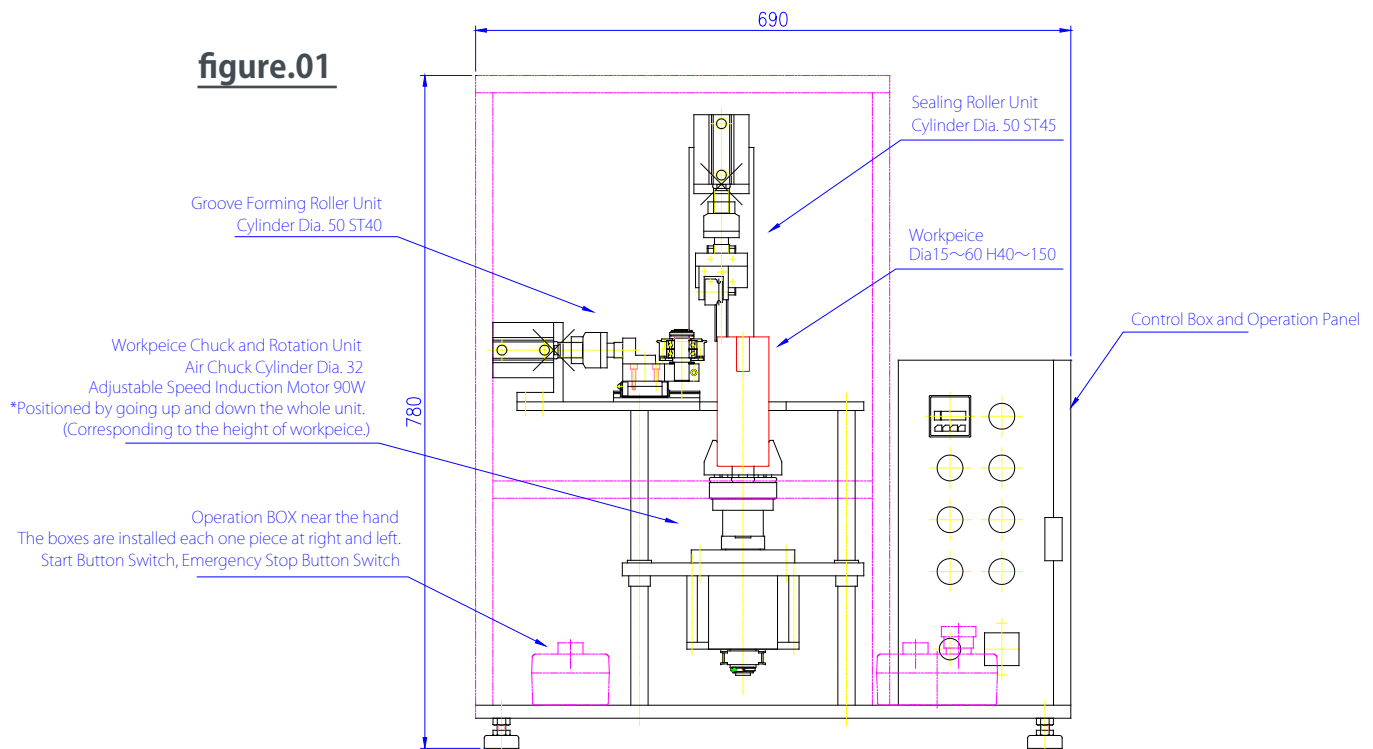


Cylindrical Cell Crimping Machine



This machine is to seal the Cylindrical Cells.
It has constant sealing condition and high efficiency.
It is enable to groove, curl and seal the cylinder cases in the compact body.

Specification:

Model No. GCC-60-150-D50

- | | |
|---------------------------|--|
| 1) Substrate | Cylindrical case |
| 2) Dimension of substrate | OD: ϕ 15 to 60mm, Height: 40 to 150mm,
WT: 0.3 to 1.2mm (Aluminum case), 0.1 to 0.6mm (Steel with plating) |
| 3) Rotation unit | Variable speed induction drive, 90W, 0 to 550rpm |
| 4) Grooving unit | ϕ 50mm, ST40mm, Ultimate pressure: Approx. 100kgf, SKD-11 |
| 5) Curling unit | ϕ 50mm, ST40mm, Ultimate pressure: Approx. 100kgf, SKD-11 |
| 6) Control | Sequencer -97 Kpa(-730 mmHg) |
| 7) Cover | 2.0 kg/cm ² |
| 8) Power supply | AC100V, Single phase 2A, Air supply: 0.5MPa |
| 9) Dimension | 700mm(W) X 500mm(D) X 800mm (H) |
| 9) Weight | 80kg |
| 10) Accessories | Holder for 18650 battery, Two pieces of injection nozzle. |

Options:

*The various type of accessories are available for the different sizes of the cases.