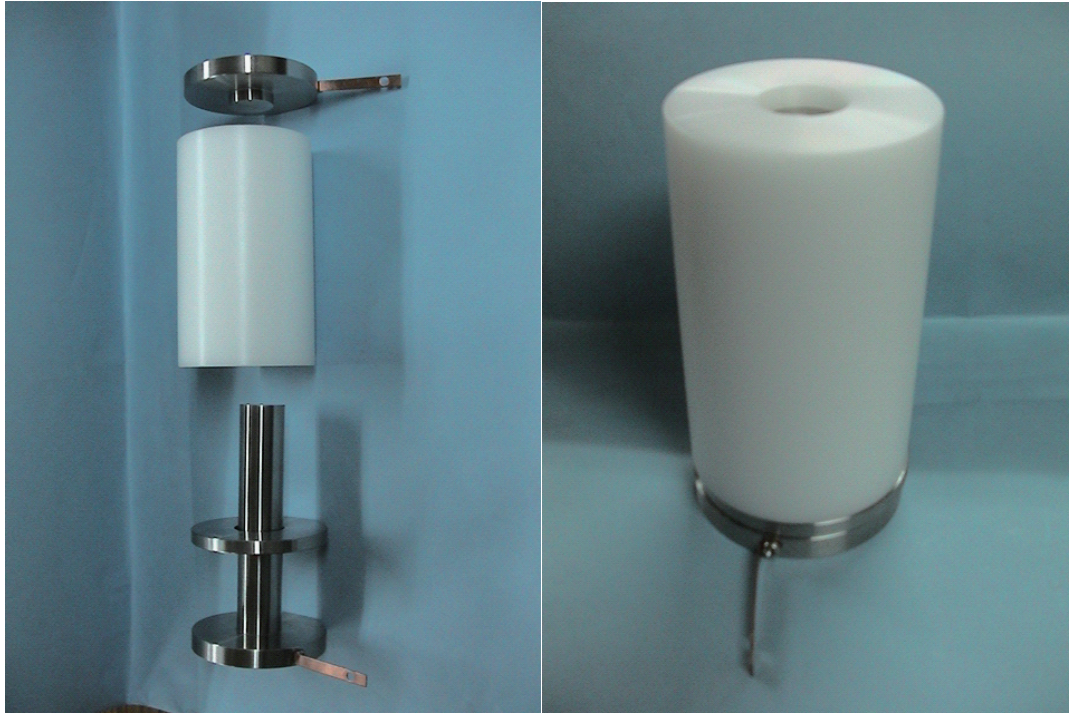


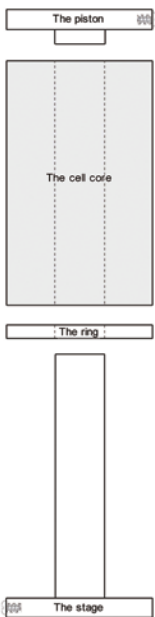
# Electrical Conductivity Measurement Cell for Powder



The cell is to measure the electrical conductivity of the powder material while pressing the powder mixed with active materials and conductive materials.

## Specification:

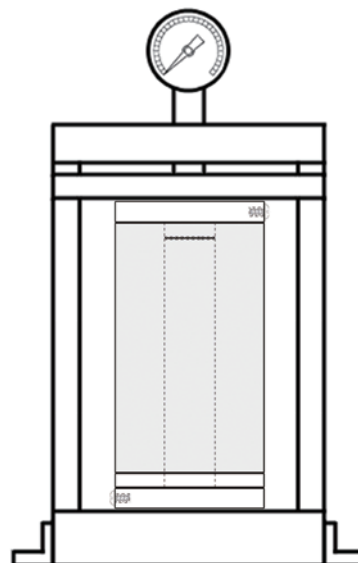
Model No. ECMC-P-20-POM



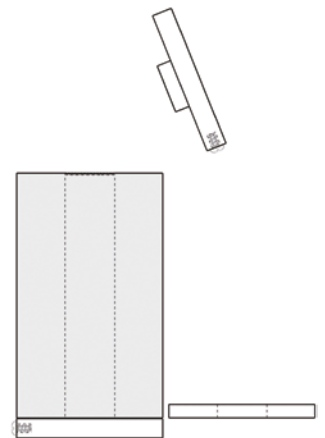
1. Firmly set the stage and the cell core.
2. Fill in the powder material to the hole of the cell core.
3. Press the powder material with piston.



5. Set the cell on the hydraulic press machine to maintain required pressure.



7. Take out the piston and the ring.
8. Then, insert the piston only to remove the powder material.



The components of ECMC-P-20POM

6. Connect the terminals to the "Electrochemical Impedance Analyzers".